

On recovering Last Interglacial changes in the Antarctic ice sheet

Louise C. Sime¹, A.E. Carlson² and M. Holloway^{1,3,4}

The sensitivity of the Antarctic ice sheet to ocean warming is a major source of uncertainty in projecting future sea levels. Antarctic ice from the Last Interglacial sampled in ice cores provides key information to better quantify this sensitivity.

Quantifying the sensitivity of the Antarctic ice sheet (AIS) to increasing ocean temperatures is central to improving projections of global sea-level rise. Capron et al. (2014) compiled strong evidence of a Southern Ocean sea-surface temperature anomaly of up to $+3.9 \pm 2.8^\circ\text{C}$ 125,000 years ago (125 kyr BP) compared to the present, and sea-level indicators for the Last Interglacial (LIG; around 129 to 116 kyr BP) suggest that this was the last time that global mean sea level (GMSL) was substantially higher than present (Dutton et al. 2015). This strongly suggests that pinning down the response of the AIS during the LIG should give insight into the last time the AIS was substantially smaller than today.

Ice-sheet modeling, alongside other lines of evidence, suggest the potential for massive loss of West Antarctic ice that is grounded below sea level (e.g. DeConto and Pollard 2016). Isotopic analysis of marine sediments and the NEEM Greenland ice core indicate that Greenland likely provided a relatively small ~ 2 m contribution to maximum LIG sea levels (NEEM Project Members 2013; Colville et al. 2011), so the reconstructed LIG GMSL peak of $+6$ to 9 m implies that the AIS experienced very significant melt during the LIG (Dutton et al. 2015). However, hunting for more direct evidence of AIS changes during the LIG has thus far proved to be surprisingly difficult, and the ultimate goal of deriving rates of AIS volume change has yet to be achieved.

Terrestrial observations of the extent of the AIS during the LIG are lacking due to subsequent growth of the AIS to its last glacial maximum volume. However, some evidence exists in the marine realm to constrain the LIG AIS. A tephra layer in the ANDRILL sediment core from the Ross Sea shows that at some time in the last 240 kyr, the Ross ice shelf was absent, potentially during the LIG (McKay et al. 2012). According to some ice-modeling studies, if the Ross ice shelf was to completely melt, the West Antarctic ice sheet (WAIS) would also deglaciate (e.g. DeConto and Pollard 2016). A recent study from a marine core off East Antarctica used Neodymium isotopes to show that the portion of the AIS overlying the Wilkes subglacial basin significantly retreated to a smaller-than-present extent during the LIG (Wilson et al. 2018). While similar studies near other sectors of the AIS could provide fruitful information on the LIG extent of the AIS, none of these approaches have, on their own, permitted the definitive establishment of AIS changes during the LIG.

The attractions of ice-core data

Antarctic ice cores are an attractive proposition for reconstructing AIS changes: several ice cores from East Antarctica covering the LIG period have been placed on an improved chronology using new gas and ice stratigraphic links (Bazin et al. 2013). The age uncertainty on this improved chronology is approximately 1500 years during the LIG, which is excellent compared to most other LIG data. Air content measurements from such ice cores have been used to attempt to infer changes in East Antarctic surface elevation over the past 200 kyr (e.g. Martinerie et al. 1994). However, Bradley et al. (2012) demonstrated that existing East Antarctic ice-core sites would experience negligible elevation change in response to a past WAIS collapse, and unknowns in firn modeling make the conversion from air content to atmospheric pressure, needed to infer elevation changes, highly uncertain. However,

water isotope ($\delta^{18}\text{O}$) data has been measured with a precision generally better than 0.1‰ on these same ice cores. These well-dated and precise measurements (Fig. 1) hold the tantalizing prospect of establishing accurate rates of AIS change during the LIG.

Steig et al. (2015) and Holloway et al. (2016) tackled the question of whether changes in the AIS, particularly ice loss from West Antarctica, would exert a significant control over the $\delta^{18}\text{O}$ signal recorded in Antarctic ice cores. Using $\delta^{18}\text{O}$ -enabled climate modeling, both demonstrated that significant West Antarctic mass loss or gain would cause major changes that should be observable in ice cores from both West and East Antarctica. Key patterns in ice-core $\delta^{18}\text{O}$ can be generated by melt from the AIS via resulting influences on atmospheric circulation, sea surface temperatures, and sea-ice extent around Antarctica (Holloway et al. 2017).

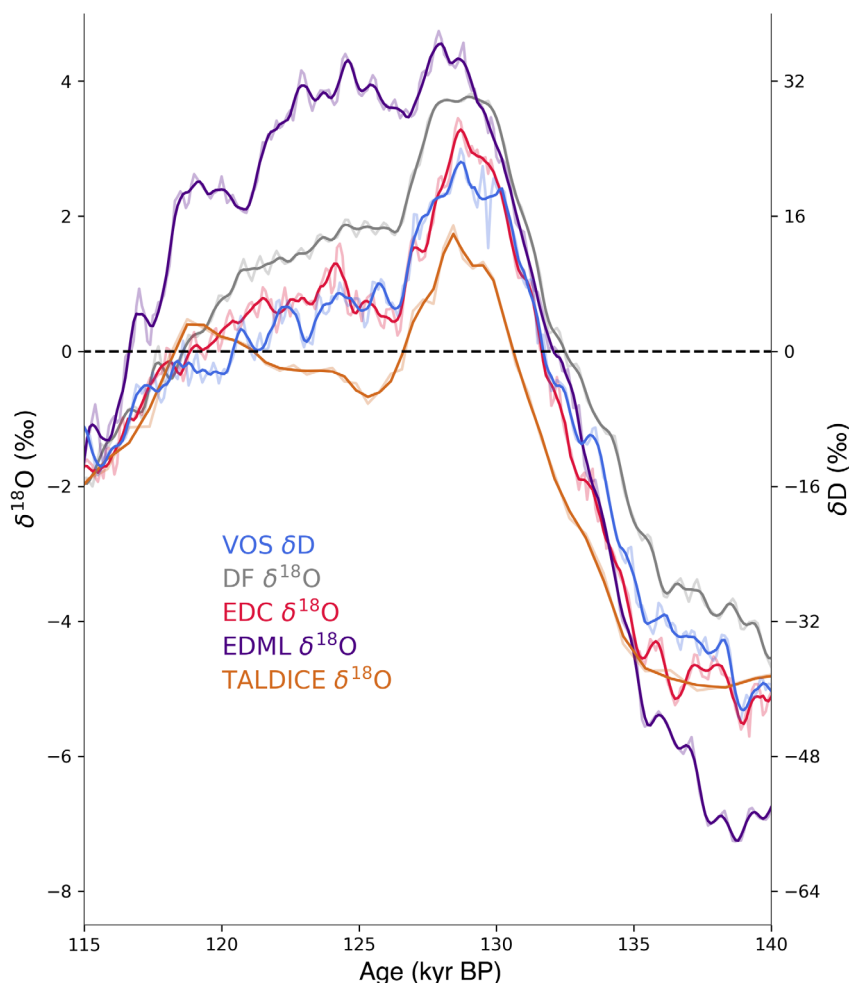


Figure 1: Last interglacial (~ 129 - 116 kyr BP) δD and $\delta^{18}\text{O}$ anomalies (relative to the most recent 3 kyr BP) from the Vostok (VOS), Dome Fuji (DF), EPICA Dome Concordia (EDC), EPICA Dronning Maud Land (EDML), and Talos Dome (TALDICE) ice-core records. Raw ice-core data (light lines) are shown as well as a smoothed record (dark lines). The locations (filled circles) of these ice cores are shown in Figure 2.

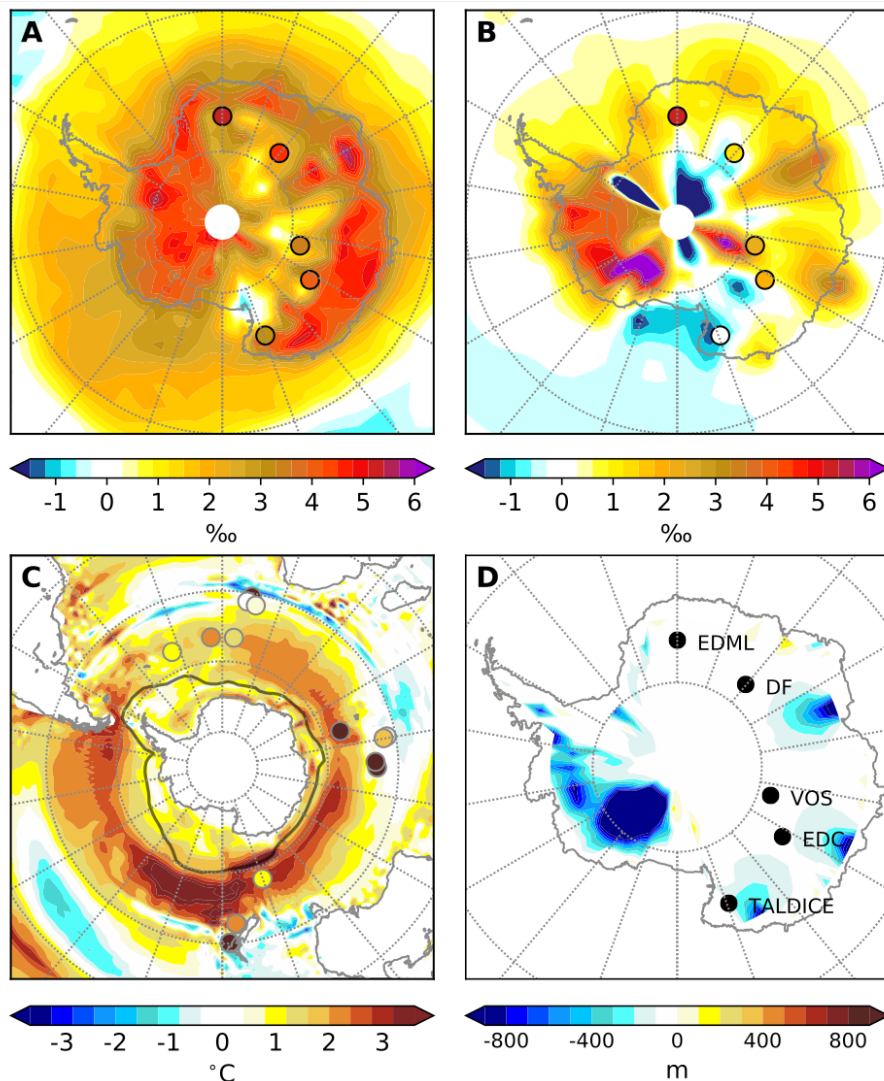


Figure 2: (A) Anomalies in Antarctic $\delta^{18}\text{O}$ from a 128 kyr BP HadCM3 climate model experiment relative to the corresponding pre-industrial experiment. (B) As in (A) but for a 125 kyr BP experiment including no meltwater forcing and Antarctic ice-sheet topography equivalent to the minimum ice-sheet extent (DeConto and Pollard 2016). (C) Simulated summer (JFM) sea surface temperature anomalies (reconstructed anomalies from Capron et al. (2014) are shown as filled circles) and winter sea-ice extent scaled corresponding to (A). (D) Antarctic elevation anomalies corresponding to (B) and locations of measured ice-core $\delta^{18}\text{O}$ anomalies shown in (A), (B), and Figure 1. See Holloway et al. (2018) for more details.

All of these aspects exert a strong and readily identifiable influence on $\delta^{18}\text{O}$ at the Antarctic ice-core sites (Holloway et al. 2016, 2018).

Constraints from ice-core data thus far

Holloway et al. (2016) investigated whether the distinctive peak in $\delta^{18}\text{O}$ observed in ice cores at ~128 kyr BP (Fig. 1) was due to the loss of West Antarctic ice, but concluded that it was extremely likely that the WAIS was largely still intact at 128 kyr BP. A recent extension of this work (Holloway et al. 2018) using a fully coupled, isotope-enabled climate model demonstrates that the reconstructed penultimate deglacial meltwater event (around 0.2 Sv of meltwater input to the North Atlantic region over around 4 kyr) appears to explain the peak at 128 kyr BP in $\delta^{18}\text{O}$, via the well-known bipolar seesaw mechanism; these results indicate that meltwater input over ~3600 years can generate the whole ice-core $\delta^{18}\text{O}$ signal at 128 kyr BP (Fig. 2a). The succession of events is thus: (i) Meltwater from Northern Hemisphere ice sheets caused warming of the Southern Ocean; (ii) This in turn melted Antarctic

sea ice over a period of around 3-5 kyr BP; and (iii) The loss of sea ice subsequently imprinted itself on the ice cores as a peak in $\delta^{18}\text{O}$ (Holloway et al. 2017). This work also indicates that the climate models used here appear to be capable of accurately capturing key timings and processes during past warm periods.

Of course, the work described above does not address the main aim, which is to uncover AIS change throughout the entire LIG. In particular, determining how the AIS may have responded after the 128 kyr BP ice-core $\delta^{18}\text{O}$ peak (itself a response to the reconstructed Southern Ocean warming and sea-ice retreat; e.g. Fig 2c) is yet to be a focus of ice-core modeling research (e.g. Holloway et al. 2016). The research performed to date does, however, provide key results to build upon:

- It establishes confidence in both climate models and in our understanding of LIG atmosphere and ocean dynamics. It also means that we now know with some confidence that the LIG $\delta^{18}\text{O}$ peak (shown in Fig. 1) was caused primarily by Antarctic

sea-ice retreat in response to relatively high Southern Ocean temperatures, themselves generated by meltwater from the penultimate deglaciation.

- It indicates that the AIS was likely resilient to higher-than-present sea surface temperatures and reduced Antarctic sea ice during the early LIG, since the AIS was largely intact at 128 kyr BP. Parts of the AIS could, however, have melted shortly after 128 kyr BP (e.g. Fig. 2b) in direct response to the warming, but this has yet to be established.

Next steps

Focused study on the period following the ice-core $\delta^{18}\text{O}$ peak (~125 kyr BP; Fig. 1) may provide important information on the magnitude and timescales of AIS change in response to a period of reduced sea ice and Southern Ocean warming. An example is illustrated in Figure 2b; ice-core $\delta^{18}\text{O}$ data at 125 kyr BP may be better explained using a reduced AIS configuration relative to present day, suggesting substantial continental ice loss in the 3 kyr period following the reconstructed LIG Antarctic sea-ice minimum.

Based on these recent advances, we suggest that the next steps should include: (i) checking, using $\delta^{18}\text{O}$ -enabled models, how ice cores may respond to other types and magnitudes of AIS changes (e.g. Fig. 2b), (ii) assessing whether our current ice-core data are sufficient to establish AIS changes; and (iii) obtaining new LIG ice-core data as necessary to constrain the models. Once these steps have been taken, we may find ourselves in a position to be able to pin down the most likely timing and contribution of the AIS to GMSL during this past warm interval.

AFFILIATIONS

- ¹Ice Dynamics and Paleoclimate, British Antarctic Survey, Cambridge, UK
²College of Earth, Ocean, and Atmospheric Sciences, Oregon State University, Corvallis, USA
³Data Science Division, National Physical Laboratory, Teddington, UK
⁴School of Geographical Sciences, University of Bristol, UK

CONTACT

Louise C. Sime: lsim@bas.ac.uk

REFERENCES

- Bazin L et al. (2013) *Clim Past* 9: 1715-1731
 Bradley S et al. (2012) *Glob Planet Change* 88-89: 64-75
 Capron E et al. (2014) *Quat Sci Rev* 103: 116-133
 Colville EJ et al. (2011) *Science* 333: 620-623
 DeConto RM, Pollard D (2016) *Nature* 531: 591-597
 Dutton A et al. (2015) *Science* 349: aaa4019
 Holloway MD et al. (2016) *Nature Commun* 7: 12293
 Holloway MD et al. (2017) *Geophys Res Lett* 44: 11,129-11,139
 Holloway MD et al. (2018) *Geophys Res Lett* 45: 11,921-11,929
 Martinerie P et al. (1994) *J Geophys Res* 99: 10565-10576
 McKay R et al. (2012) *Quat Sci Rev* 34: 93-112
 NEEM Project Members (2013) *Nature* 493: 489-494
 Steig EJ et al. (2015) *Geophys Res Lett* 42: 4862-4868
 Wilson DJ et al. (2018) *Nature* 561: 383-386